

CHANNEL  
NEWSLETTER



## Navigating What's Next.

This newsletter is to keep the channel up-to-date on all things Lunavi.

## We Want to Hear From You!

With 2022 kicking off, we want to make sure that we're doing all we can to set you up for success. To improve our partnership, please take a minute to fill out a brief anonymous survey regarding your preferences.

[COMPLETE SURVEY](#)

## Webinar Series

FRIDAYS @ 11AM ET

### Azure Learning Series

January 28th: **Cloud Architecture**  
February 4th: **Information Security**  
February 11th: **Azure DevOps**  
February 25th: **What's New in Azure**  
March 4th: **Azure Optimization**



Presented by  
Azure Architect Eric Bogenschuetz  
& 5-time Microsoft MVP Aman Sharma

Lunavi is teaming up with our customer Eversource Energy for a new e-learning series! Join experts [Aman Sharma](#) and [Eric Bogenschuetz](#) to expand your Microsoft Azure knowledge, with five sessions covering everything from cloud architecture, security, and optimization to DevOps and the latest feature releases.

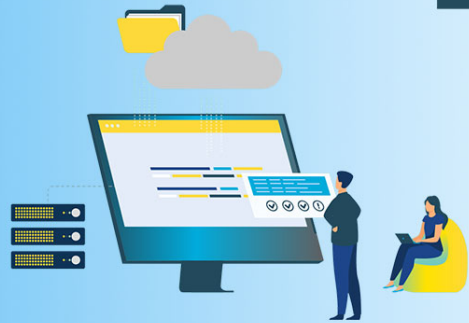
[REGISTER TODAY](#)

## Gartner Report

COMPLIMENTARY GARTNER REPORT

# Master the Techniques for Azure Cloud Cost Optimization

Download Now



"Significant savings can arise from a fairly small number of Azure optimizations, many of which also serve as essential governance foundations for the future."

In our newest complimentary Gartner report, get up to date on the research highlighting proven approaches for infrastructure and operations leaders to optimize the costs of traditional and modern workloads in Microsoft Azure.

DOWNLOAD NOW

## Win Wire - SVS Vision



SVS Vision is a North American company that provides eye care services and products across the US, headquartered in Michigan. In the past, SVS Vision was hosted by a Managed Services company for their cloud environment. During this time, the hosting provider experienced multiple ransomware attacks that left clients vulnerable. Due to the critical nature of the applications and limited staff expertise around Azure, SVS Vision was seeking to leverage a managed service provider to bolster their cloud presence and increase their security posture.

Lunavi proposed a multi-phase consulting services engagement, beginning with a Cloud Readiness Assessment, Azure Foundation Build, and Infrastructure Operations Management. This phase is currently being delivered and will be followed by a separate engagement to migrate the remaining digital assets to Azure.

Lunavi's professional services and ongoing infrastructure management will enable SVS Vision to have a secure environment in Azure and have a cost-effective solution that drives value for the organization while limiting technological vulnerabilities.

## Azure Expert MSP

Lunavi is proud to be  
recognized as a  
**2022 Azure Expert MSP**



We're thrilled to have been selected as an Azure Expert MSP for our third year in a row. This prestigious honor is awarded to less than a hundred Azure experts globally and requires a vigorous vetting process. Partners need to validate their skills, their customer success, and ability to scale and a commitment to providing next-generation managed service offerings.

This distinguished award highlights us as an exceptional service provider to our clients and guarantees that our clients will walk away satisfied. We're grateful to be recognized and we will continue to strive to earn your business.

**Thanks for Reading!**

Lunavi, 340 Progress Circle, Cheyenne, WY 82007

[Unsubscribe](#) [Manage preferences](#)